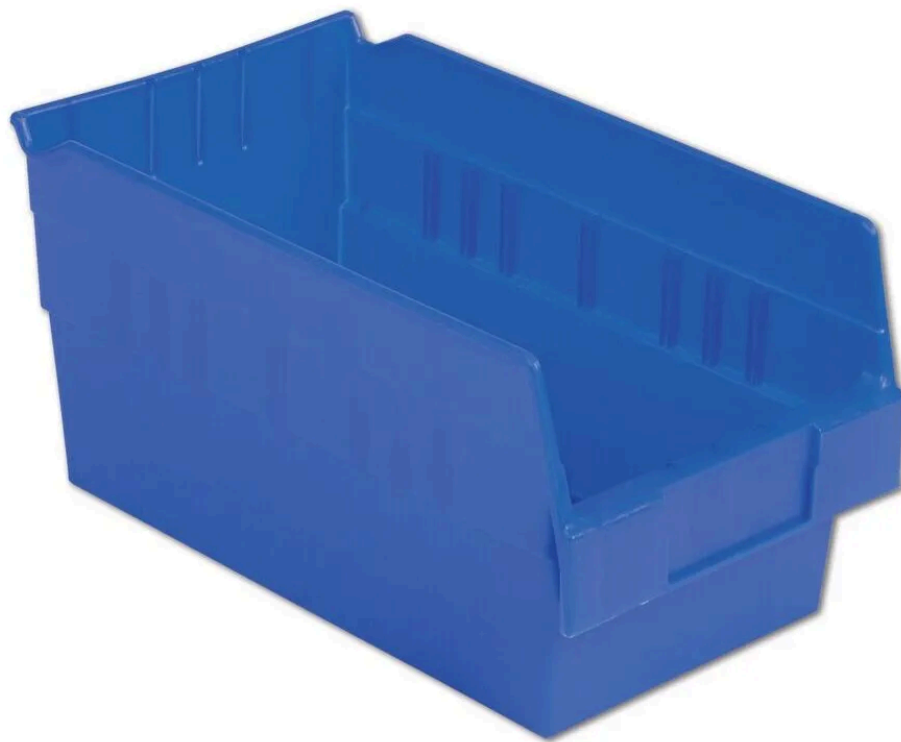


SB126-6 LEWISBins+ - ORBIS

 orbiscorporation.com/en-us/products/lewisbins/shelf-bins/sb126-6/



Description

LEWISBins+ Shelf Bin series consists of 4" and 6" tall plastic shelf bins, designed for 12", 18" and 24" depth shelving units. These injection molded bins are designed to replace limited-use corrugated boxes for long term cost savings and are available in red, blue, yellow and green. LEWISBins+ Shelf Bins are fully nestable when empty and fully recyclable at the end of their service life.

[Click here to download the divider compatibility chart](#)

Features

- Enhanced picking and inventory control – Orange Kanban width divider gives visual cue for replenishment, preventing stock-outs
- Raised hopper front allows up to 35% more material storage than comparable bins
- Full length divider locks into bin creating a second compartment
- Rolled rim design and molded-in rib structure ensures bin integrity, limits damage and prevents vacuum lock when nested

Additional information

Dimensions	11.6 × 6.6 × 6.0 in
-------------------	---------------------

Outside Length (in.)	11.6
Outside Width (in.)	6.6
Outside Height (in.)	6.0
Inside Length (in.)	10.1
Inside Width (in.)	5.4
Weight (lb.)	0.6
Carton Quantity	8